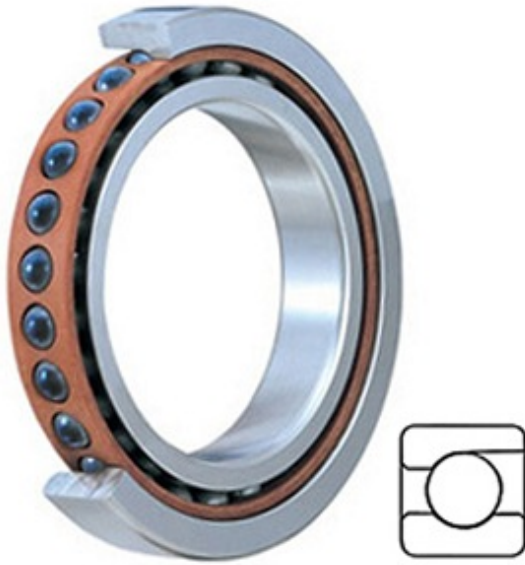




# AMERICAN BEARING MFG.CORP.



2MMC9128WI SUL Bearing 2D drawings and 3D CAD models

5.512 Inch | 140 Millimeter x 8.268 Inch | 210 Millimeter x 1.299 Inch | 33 Millimeter TIMKEN 2MMC9128WI SUL Precision Ball Bearings

Bearing No. 2MMC9128WI SUL

Category	Precision Ball Bearings
Inventory	0.0
Manufacturer Name	TIMKEN
Minimum Buy Quantity	N/A
Weight	3.456
EAN	0087796338173
Product Group	B04270
Enclosure	Open
Precision Class	ABEC 7   ISO P4
Material - Ball	Ceramic
Number of Bearings	1 (Single)
Contact Angle	15 Degree
Preload	Light
Raceway Style	1 Rib Outer Ring
Cage Material	Phenolic
Rolling Element	Ball Bearing
Mounting Arrangement	Universal
Flush Ground	Yes
Inch - Metric	Metric
Other Features	Single Row   Angular Contact   Super High Precision   Hybrid   Corrosion Resistant Ball
Long Description	140MM Bore; 210MM Outside Diameter; 33MM Width; Open Enclosure;



## AMERICAN BEARING MFG.CORP.

	ABEC 7   ISO P4 Precision; Ceramic Ball Material; 1 (Single) Bearings; 15 Degree Contact Angle; Phenolic Cage Material; 1 Rib Outer Ring
Category	Precision Ball Bearings
UNSPSC	31171531
Harmonized Tariff Code	8482.10.50.28
Noun	Bearing
Keyword String	Angular Contact Ball
Manufacturer URL	<a href="http://www.timken.com">http://www.timken.com</a>
Manufacturer Item Number	2MMC9128WI SUL
Weight / LBS	7.62
B	1.299 Inch   33 Millimeter
D	8.268 Inch   210 Millimeter
d	5.512 Inch   140 Millimeter